

FEATURES

Easy depth adjuster
Simple ratchet dial allows depth adjustment



Slim contact nose



Easy jam clearance



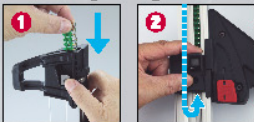
One click lever gives you clear jammed pin easily

Light swing trigger
only 2.5 lbs

Makes firing effortless when reaching out or shooting overhead



Easy pin-loading magazine



Stainless steel mesh filters



Reduces fine dust in take and exhaust up to 2 times foam filters

Push button fuel door



Soft molded grip
For comfortable ergonomic design



LED low battery and service maintenance indicator

Reversible belt loop hook

One click lever
Track magazine removal is simple

Small nose makes it easy to fix electrical and plumbing clips to base materials



STANDARD EQUIPMENT



Battery JP606H
4,600 shots per charge.

Charger JC610M

Comes with plastic carry case

AC adapter

TOOL SPECIFICATIONS

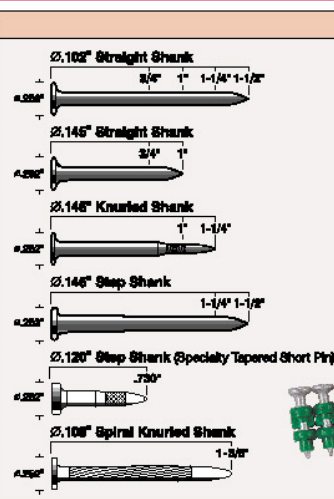
PRODUCT NO.	GS732C
DIMENSIONS	14-3/8" (H) x 4-7/8" (W) x 17-1/8" (L)
WEIGHT	8.1 lbs (including Fuel Cell and Battery)
LOAD CAPACITY	42 pins
BATTERY	MAX JP606H battery
BATTERY CAPACITY	6V DC, 1.5Ah
CHARGER	MAX JC610M charger
POWER SOURCES	100-240V
RECHARGE TIME	150 minutes maximum

FASTENER

CONCRETE / STEEL PINS	
COLLATION ANGLE	0 degree
LENGTH	1/2" to 1-1/4" (1/2" to 1-1/2", with the optional magazine)
SHANK DIAMETER	.102" to .145"
HEAD DIAMETER	.252"
COLLATION TYPE	Plastic

PINS AND APPLICATIONS

Item Name	Pin length	Pin shank	Typical Applications	ICC-ES Listing
CP-719V6(G2)	3/4"	.102" Straight	Metal Track to Concrete	ESR-3276
CP-725V6(G2)	1"	.102" Straight	Light Gauge Metal Track to Concrete	ESR-3276
CP-732V6(G2)	1-1/4"	.102" Straight	Fixture to Concrete or Block	ESR-3275
CP-738V6(G2)	1-1/2"	.102" Straight	Fixture to Concrete or Block	ESR-3275
CP-719W7(G2)	3/4"	.145" Straight	Metal Track to Concrete	ESR-3275
CP-725W7(G2)	1"	.145" Straight	Light Gauge Metal Track to Concrete, 1/4" & 3/8" Plywood to Concrete and Block, Rubber Membrane to Concrete or Block.	ESR-3275
CP-W725W7-K(G2)	1"	.145" Knurled	1/2" & 5/8" Plywood to Steel	
CP-W732W7-K(G2)	1-1/4"	.145" Knurled	3/4" Plywood to Steel 1"	
CP-W732W7(G2)	1-1/4"	.145" Step	Fixture to Concrete or Block	ESR-3275
CP-W738W7(G2)	1-1/2"	.145" Step	Fixture to Concrete or Block	ESR-3275
CP-W712W0(G2)	1/2"	.120" Step	Metal Track to Steel	ESR-3275
CP-W717W0(G2)	.880"	.120" Step	Metal Track to Steel or Hard Concrete	
CP-W718W0(G2)	.730"	.120" Step	1/4" Plywood to Steel or Hard Concrete	
CP-W735V7-K8(G2)	1-3/8"	.108" Spiral Knurled	Plywood/Denz Glass to Steel Stud	



OPTIONAL MAGAZINE

Up to 1-1/2" Long Magazine



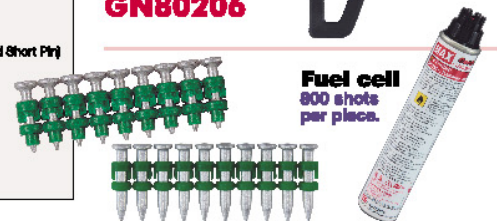
GN80208

Up to 1-1/2" Short Magazine



GN80206

Fuel cell
800 shots per piece.



Each box of pins come packaged with one fuel cell.

The specifications and design of the products in this catalog will be subject to change without advance notice due to our continuous efforts to improve the quality of our products.



MAX USA CORP.

257 East 2nd Street Mineola, New York 11501
Phone: 800-223-4293 Fax: 516-741-8272
www.maxusacorp.com

Dealer: