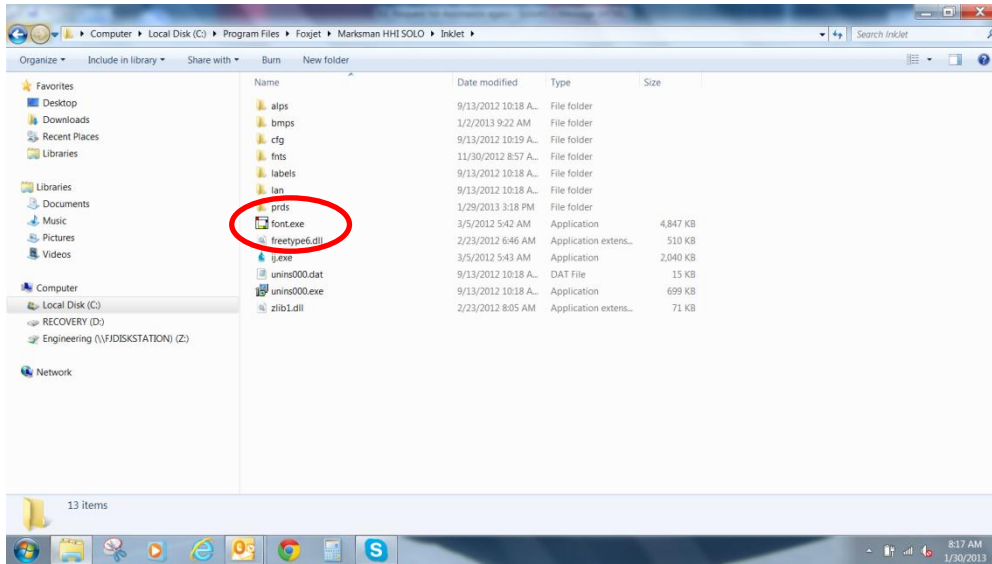
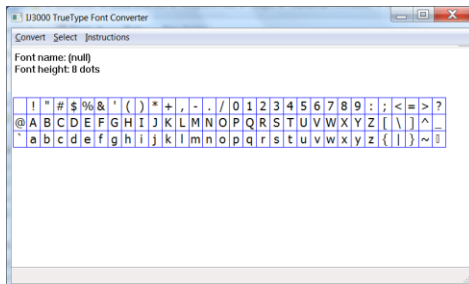


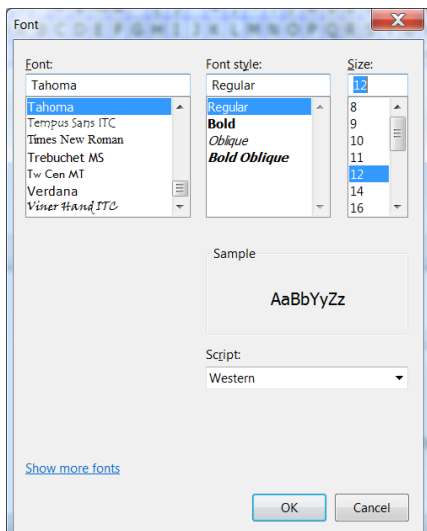
First you go to this folder on your pc and look for the font.exe file.



Open this program.

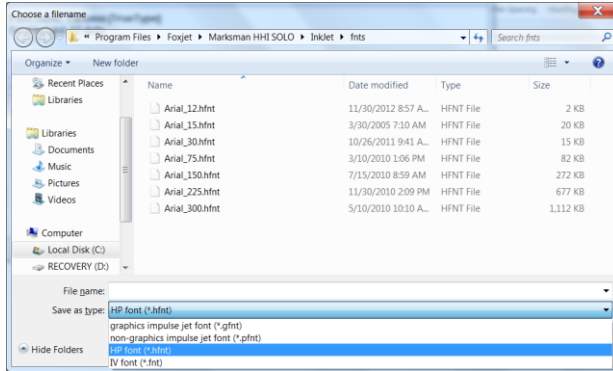


And Select a True Type font from your computer.



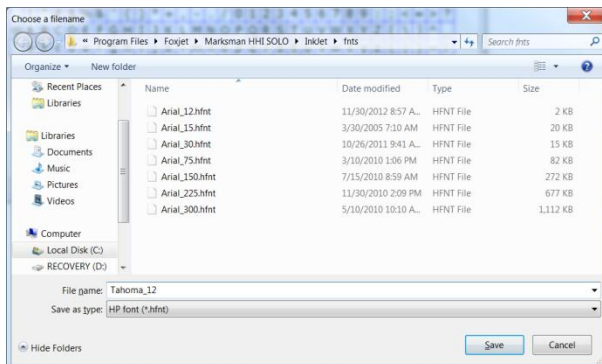
Remember that you have to do them one at a time, Type, style, size.

Select Covert and save as...



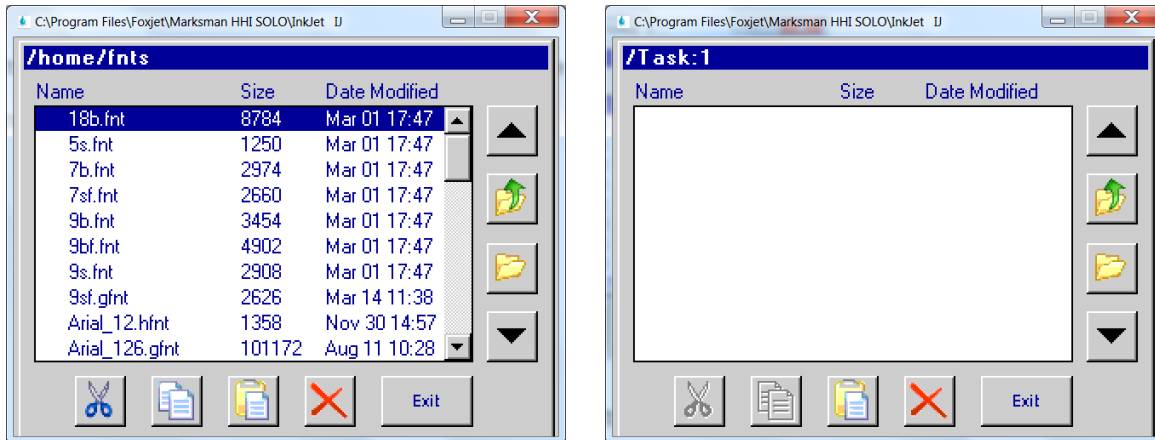
Change the file type to whatever type of print head you are using, in the case of the Solo it would be HP font, \*.hfont.

Enter a file name that describes the font and size, there is a limit of 14 characters for font names.



Now you have created the font in the right format for an HHI, it will be saved in the fnts folder.

Now you will need to copy it from the pc to the HHI using a USB stick and file manager.



Copy and Paste the file into the home/fnts folder, and in the /Task folder, this is the print head.

You should now be able to use this font on the HHI/Solo.