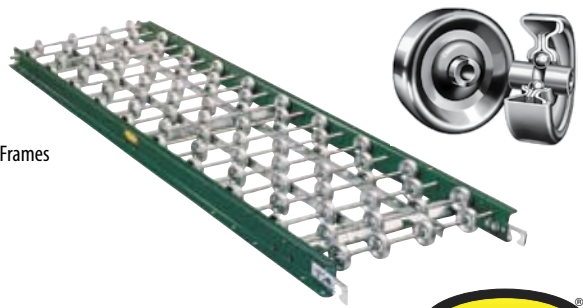


WHEEL

Gravity Skatewheel Conveyor

Gravity Skatewheel conveyor is ideally used to convey lightweight packages or when operation requires lightweight sections. Useful in setting up temporary conveyor lines in warehousing activities, shipping departments, assembly areas, etc.

- 4 Widths
- Powder Painted Steel or Aluminum Frames
- Axles on 3 in. or 4 in. Centers



STEEL FRAMES

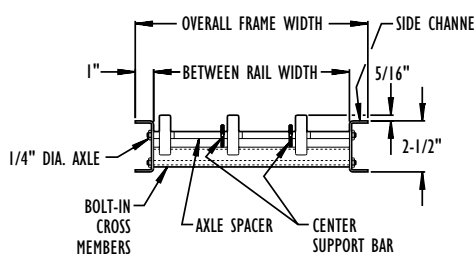
3" AXLE CENTERS								4" AXLE CENTERS							
12" Overall Width				15" Overall Width				12" Overall Width				15" Overall Width			
Model No.	WPF	Wgts. (Lbs.)		Model No.	WPF	Wgts. (Lbs.)		Model No.	WPF	Wgts. (Lbs.)		Model No.	WPF	Wgts. (Lbs.)	
		5'	10'			5'	10'			5'	10'			5'	10'
3SW-12-16	16	43	80	3SW-15-16	16	48	87	4SW-12-12	12	38	70	4SW-15-12	12	43	77
3SW-12-12	12	38	72	3SW-15-12	12	43	78	4SW-12-9	9	34	64	4SW-15-9	9	40	70
3SW-12-10	10	37	68	3SW-15-10	10	40	73	4SW-12-8	8	33	62	4SW-15-8	8	38	67
3SW-12-8	8	35	65	3SW-15-8	8	38	69	4SW-12-6	6	32	60	4SW-15-6	6	37	63
3SW-12-6	6	33	63	3SW-15-6	6	37	68	4SW-12-4	4	30	57	4SW-15-5	5	33	62
18" Overall Width				24" Overall Width				18" Overall Width				24" Overall Width			
Model No.	WPF	Wgts. (Lbs.)		Model No.	WPF	Wgts. (Lbs.)		Model No.	WPF	Wgts. (Lbs.)		Model No.	WPF	Wgts. (Lbs.)	
		5'	10'			5'	10'			5'	10'			5'	10'
3SW-18-20	20	54	98	3SW-24-28	28	65	118	4SW-18-15	15	47	86	4SW-24-21	21	57	102
3SW-18-18	18	49	92	3SW-24-24	24	62	112	4SW-18-14	14	44	82	4SW-24-18	18	55	98
3SW-18-16	16	46	87	3SW-24-20	20	57	103	4SW-18-12	12	41	77	4SW-24-15	15	51	91
3SW-18-14	14	44	83	3SW-24-18	18	55	100	4SW-18-11	11	40	75	4SW-24-14	14	50	90
3SW-18-12	12	41	77	3SW-24-16	16	52	95	4SW-18-9	9	37	69	4SW-24-12	12	47	85

All weights in catalog are conveyor weights only. Accessories, crating, etc., are not included.

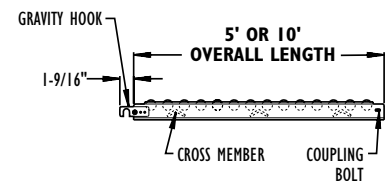
ALUMINUM FRAMES

12" Overall Width				15" Overall Width				12" Overall Width				15" Overall Width			
Model No.	WPF	Wgts. (Lbs.)		Model No.	WPF	Wgts. (Lbs.)		Model No.	WPF	Wgts. (Lbs.)		Model No.	WPF	Wgts. (Lbs.)	
		5'	10'			5'	10'			5'	10'			5'	10'
3AW-12-16	16	23	43	3AW-15-16	16	26	41	4AW-12-12	12	22	40	4AW-15-12	12	24	43
3AW-12-12	12	21	39	3AW-15-12	12	23	42	4AW-12-9	9	20	37	4AW-15-9	9	22	40
3AW-12-10	10	20	36	3AW-15-10	10	22	39	4AW-12-8	8	19	36	4AW-15-8	8	21	38
3AW-12-8	8	19	35	3AW-15-8	8	21	37	4AW-12-6	6	18	34	4AW-15-6	6	20	37
3AW-12-6	6	18	33	3AW-15-6	6	20	36	4AW-12-4	4	17	32	4AW-15-5	5	19	35
18" Overall Width				24" Overall Width				18" Overall Width				24" Overall Width			
Model No.	WPF	Wgts. (Lbs.)		Model No.	WPF	Wgts. (Lbs.)		Model No.	WPF	Wgts. (Lbs.)		Model No.	WPF	Wgts. (Lbs.)	
		5'	10'			5'	10'			5'	10'			5'	10'
3AW-18-20	20	28	52	3AW-24-28	28	34	63	4AW-18-15	15	24	44	4AW-24-21	21	29	52
3AW-18-18	18	27	49	3AW-24-24	24	32	59	4AW-18-14	14	23	42	4AW-24-18	18	27	50
3AW-18-16	16	25	46	3AW-24-20	20	30	55	4AW-18-12	12	21	39	4AW-24-15	15	26	47
3AW-18-14	14	24	44	3AW-24-18	18	29	53	4AW-18-11	11	21	38	4AW-24-14	14	25	46
3AW-18-12	12	22	41	3AW-24-16	16	28	51	4AW-18-9	9	19	35	4AW-24-12	12	24	44

All weights in catalog are conveyor weights only. Accessories, crating, etc., are not included.



Frame Material	Support Centers	Capacity (Lbs.)	
		Maximum Distributed Live Load Per Foot	Maximum Load Per Wheel
Steel	5'	250	65
	10'	31	
Aluminum	5'	83	45
	10'	10	



• STANDARD SPECIFICATIONS

WIDTH—12 in., 15 in., 18 in., and 24 in. overall.

FRAME—2 1/2 in. deep x 1 in. flange x 12 ga. powder painted formed steel or 3/8 in. heat-treated aluminum channel with bolt-in cross members.

COUPLINGS—Bolts on one end, hooks on opposite end.

LENGTHS—5 ft. & 10 ft. straight sections.

WHEELS—1 15/16 in. O.D. ball bearings run in hardened raceway with life-time lubrication. Corrosion resistant aluminum or zinc-coated steel.

AXLES—3/4 in. dia., threaded one end with locknut. Spaced on 3 in. or 4 in. centers, specify.

CAPACITY—See Load Capacity Chart this page.