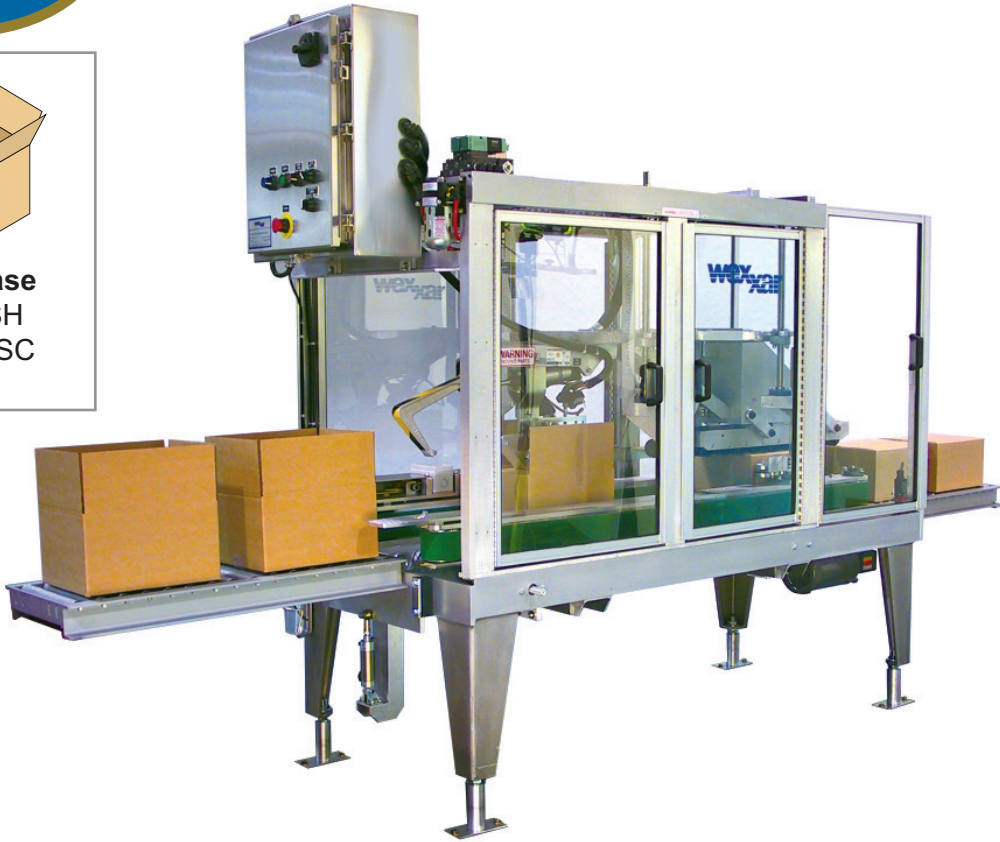




Fully Automatic Case Sealer with Hot Glue Closure  
Up to 48 cases per minute



**RSC Case**  
The WSH  
seals RSC  
cases.



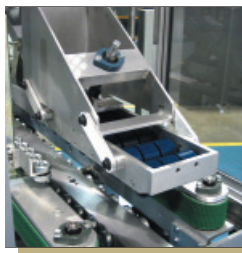
## Automatic Case Top Sealer

An outstanding combination of versatility, reliability, compact design and high speed capability sets WEXXAR's WSH fully automatic case sealer apart from all competitors. Designed to satisfy the demands of heavy-duty industrial applications, the WSH fits easily in any packaging line application. It produces gap-free, tightly butted top flap sealing with consistent, accurate adhesive application at continuous high speed. WEXXAR's WSH accommodates a wide range of case sizes and the heavy-duty drive system ensures cases retain their shape and alignment in every application.



### Various Case Sizes

The WSH precisely folds major & minor flaps and can accommodate a wide range of case sizes at high speed.



### Squareness Assured

The heavy-duty side belt drive system ensures that cases retain their shape and alignment regardless of their contents or capacity.



### Operator Safety

The Wexxar WSH aides in employee safety with standard interlocked guarding.

Case Sealer  
WSH

# WSH Automatics Case Top Sealer with Glue Closure System

## WSH Features

- Production speed 45 cases per minute (up to 48 cases per minute with high-speed option), designed and built for sustained heavy-duty industrial applications
- Advanced fully interlocked safety guarding
- Interlocked guard doors allow easy access during set-up and maintenance
- Safe, easy and quick size changeover in under 5 minutes
- Easy to maintain, uses the highest quality commercially available components
- Corrosion resistant construction stands up to the most demanding working environments. Complete wash-down options are also available
- Meets NEC, UL, ULC, NFPA and OSHA standards

## Complete Solution



**Wexar WF20 and WF30 Case Former**  
The WF20 and WF30 fully automatic case formers continuously and effortlessly open and form cases, presenting them ready for packing.



**ABH Fully Automatic Bliss Former**  
The ABH universally forms many types of Bliss boxes, balancing maximum vertical stacking strength with economical use of corrugated.



**WSH Washdown & Enviroguard Option**  
Stainless steel case packing and sealing system designed for washdown environment. Guards against corrosion and saves on maintenance.

## WSH Specifications

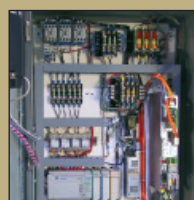
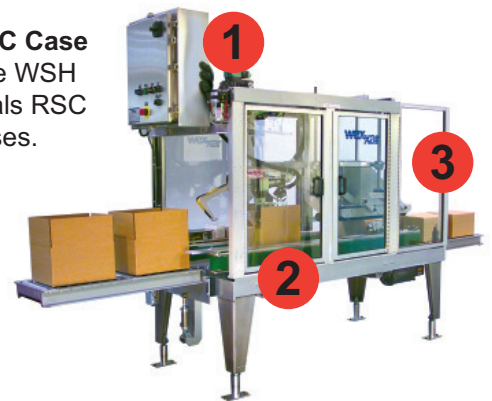
Case Size Range	Length	Width	Height
Minimum	10" 254 mm	6" 152 mm	5" 127 mm
Maximum	20" 508 mm*	18" 457 mm	20" 508 mm
Machine Speed: 45 cases per minute. 48 cases per minute with high speed option.			

\* Specifications are subject to change without notice.

## How the WSH Works

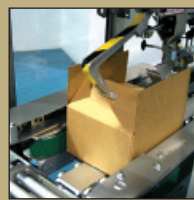


**RSC Case**  
The WSH seals RSC cases.



### 1 Easy Set Up

Features hand crank size adjustment and UL Listed Control Panel for easy start and stop.



### 2 Side Compression

The cases with product are transferred by the side belt system, which ensures gap-free, tightly-butted top flap alignment.



### 3 Precision Glue Application

Glue systems are recognized, name brand quality for precision application. The positive roller compression ensures a flat and complete seal.



Wexar Packaging Inc. Phone: 604-930-9300  
10101 Nordel Court Fax: 604-930-9368  
Delta, BC Canada Email: sales@wexar.com  
V4G 1J8 Web: www.wexar.com

a division of Pro Mach

Backed by Wexar's warranty and experienced, nationwide service team.